



RoofSafe[®] Anchor

Ready to spring
into action when
you need it most



The innovative NEW
RoofSafe[®] Anchor

with





Anchor visualisation showing SpiraTech Force Management Technology. Image for illustrative purposes only.

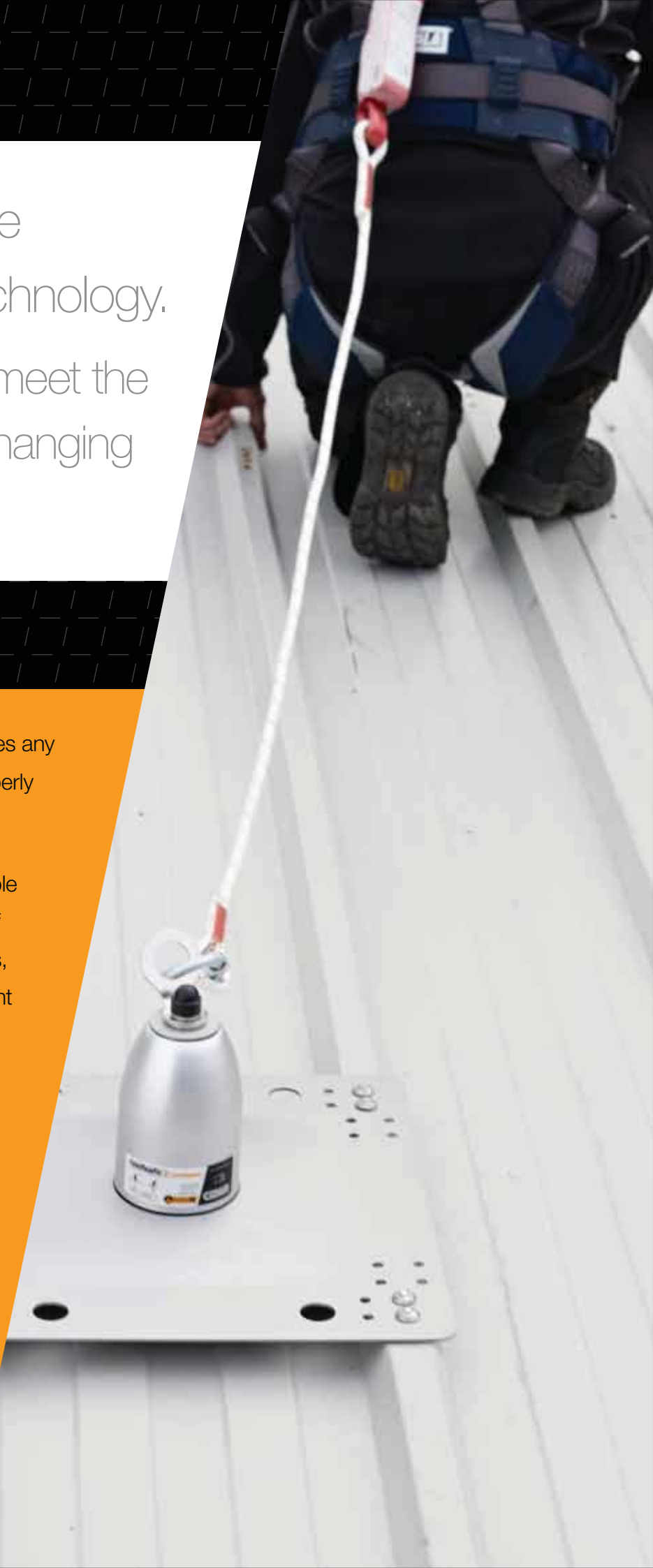
SpiraTech™ Force Management Technology.

A new product to meet the
needs of today's changing
work environment.

Current workplace legislation requires any person working at height to be properly protected against the risk of falling.

This is especially important for people required to work in many aspects of building maintenance tasks on roofs, as they can be exposed to significant risks whilst carrying out their duties.

Changes in weather, fragile roof elements, slips and trips, wind, steep inclines and slippery surfaces can all add to the dangers, so providing a safe system of work is essential, ensuring both compliance with regulations and the safety of employees and contractors.



RoofSafe® Anchor



The Uniline RoofSafe® Anchor from Capital Safety has been designed to eliminate or substantially reduce the risk of injury or death to operatives working at height, whilst ensuring the integrity of the structure to which it is attached.

Roofs are changing to accommodate more insulation materials and being designed to utilise lighter materials and take advantage of new technologies. At Capital Safety we are changing Uniline's roof anchor product to ensure the highest levels of safety in modern building design.

Our customers can benefit from modern roofing design and ensure safety and structural integrity by choosing our new and technologically advanced RoofSafe® Anchor.

Additionally, as the desire to comply with health and safety regulations increases, the need for safety solutions on older building and structures increases. The new RoofSafe® Anchor makes incorporating horizontal lifelines in older building more economical, allowing safety obligations to be met for realistic costs.

Standing Seam





Force Management Technology

NEW Modular product includes flexibility in system design, including accommodating roof refurbishment and green roof projects.

NEW SpiraTech™ Force Management technology that provides the lowest distributed load to the roof system. The maximum end load in a multiuser fall will be less than 6kN.

NEW Toggle fitting system, for a faster, more cost effective installation and improved thermal efficiency.





Bitumen



Built Up

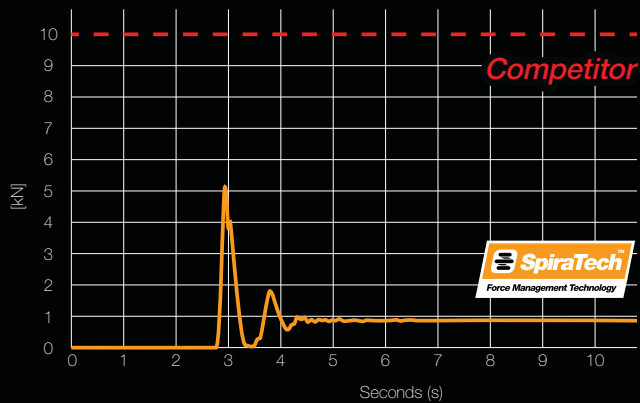


PVC

Features and Benefits

- The RoofSafe® Anchor can be used for either work restraint or fall arrest and can be installed on standing seam, composite and built up roofing systems and multiple flat roofing and membrane roofing systems.
- The RoofSafe® Anchor is multi-directional and can activate and absorb energy no matter in which orientation the load is applied, which provides total freedom and flexibility in system design.
- The unique energy absorbing system inside the RoofSafe® Anchor has reduced the overturning moment on the fixings by half compared to our previous anchor and those of our competitors, enabling us to utilise fewer fasteners in many circumstances. This reduces the number of roof penetrations and saves time and money during installations.
- For flat roofing systems we have designed a new toggle fixing method that speeds up installation time and reduces thermal bridging, reducing heat loss from a building. Both of these features save time and money for the customer.
- The RoofSafe® Anchor utilises marine grade alloys in its design to reduce the overall weight and save shipping costs. It has the additional benefit of being safer to move around the roof during installation.
- The RoofSafe® Anchor is modular in design, taking less space to pack and ship, again reducing additional costs of installing a roof safety system.
- The RoofSafe® Anchor has been designed so that a vertical pull test to 5kN can be applied without affecting the anchors integrity. This enables annual test and verification of its structural integrity, ensuring compliance and peace of mind.
- The base plate designs incorporate multiple fixing options to reduce the complexity of specification and in turn maximise inventory to ensure speedy delivery.
- The RoofSafe® Anchor for flat roofing systems has been designed to be easy to weather proof ensuring the integrity of the building envelope and works perfectly in conjunction with 'Green' roofing systems.
- The RoofSafe® Anchor looks smart and compliments modern building design, as well as fitting neatly with older buildings, enabling compliance and peace of mind no matter the type of project.
- The Anchor conforms to EN 795, OSHA, ANSI, AUS/NZ, standards and has been tested to both EN795 Class A and C Standards.

Forces indicator: SpiraTech vs Competition

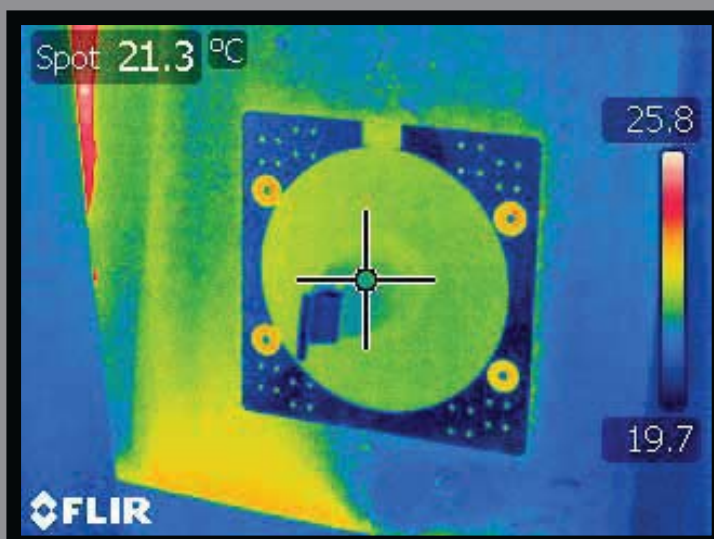
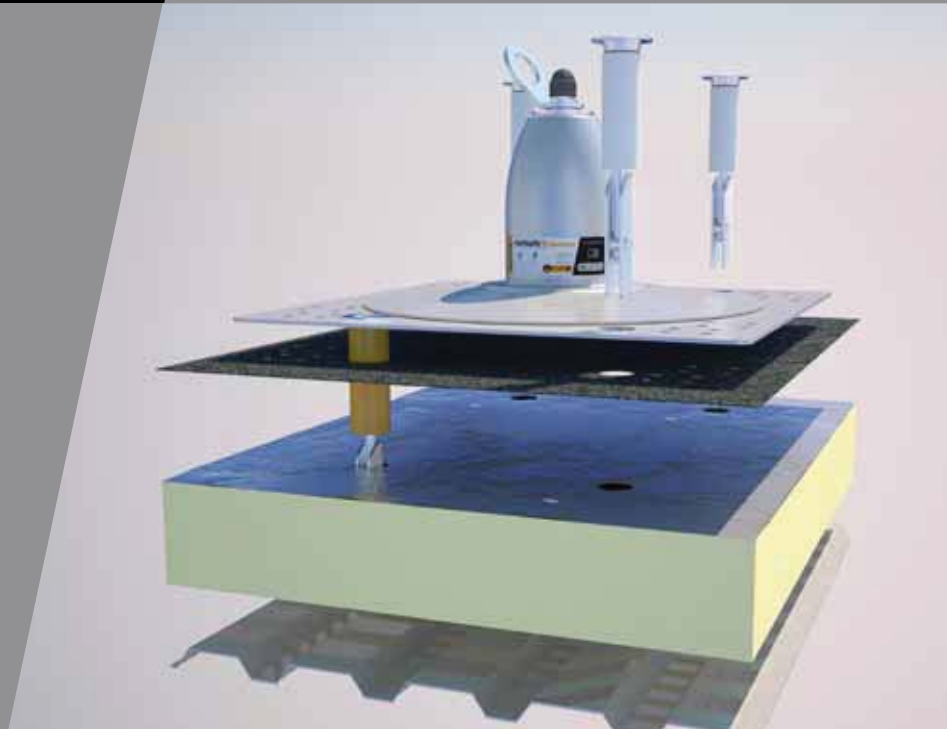


In the event of a fall, the RoofSafe® Anchor breaks open, deploying the unique and patented SpiraTech™ Force Management Technology absorbing system, which reduces the forces generated on the roof structure to less than 6kN, the lowest of any of its kind on the market. This enables the anchor to be installed on a wide variety of old and new roof types without risk to structural integrity.

Installation

The RoofSafe® Anchor can be used to facilitate the installation of a horizontal lifeline system that allows continuous uninterrupted access to all areas of a roof or alternatively can be used as a single point of anchor for maintenance tasks in localised areas.

The anchorage eye on the single point anchor product rotates to provide maximum functionality and safety in use.



In the unlikely event that the anchor is deployed, it is possible to remove the SpiraTech™ module and replace it with a new one. This is also an advantage with the ever changing building regulations, with the need for increased depth of roof insulation.

The design of the RoofSafe® Anchor reduces thermal bridging when used in flat roof applications, helping compliance with building regulations and saving money.

System Components



7241161

RoofSafe® Anchor System
Eye & Pin



7234016

8mm Hex Swage Tensioner



7241162

RoofSafe® Anchor 90° Corner



7241163

Roofsafe® Anchor 45° Corner



7234086

RoofSafe® Anchor
Intermediate Guide



7234011

8mm Hex Swage Toggle



7234086

RoofSafe® Anchor Variable Guide



7234020

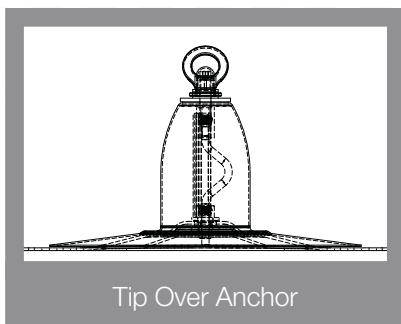
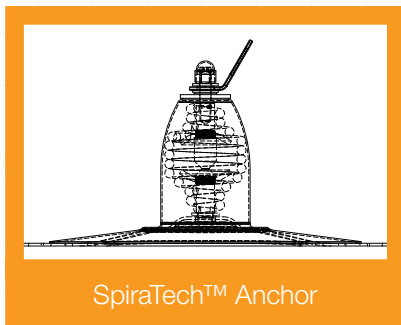
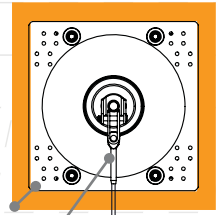
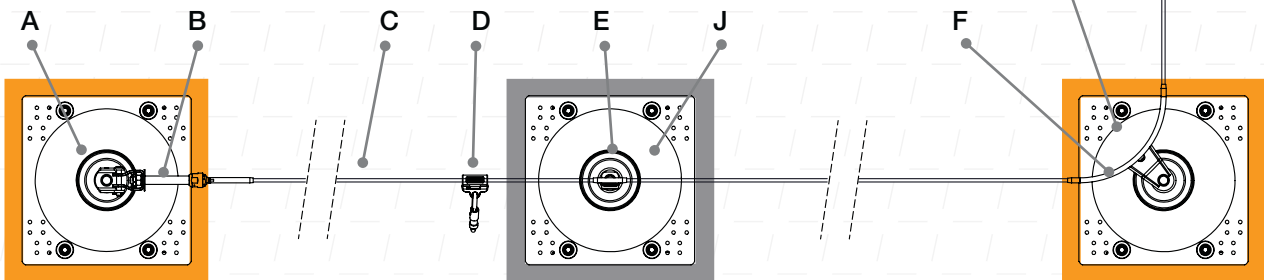
8mm UniGrab & Karabiner

System Layout

- A** RoofSafe® Anchor System Eye & Pin (7241161)
- B** 8mm Hex Swage Tensioner (7234016)
- C** 8mm 7x7 SS Cable Per M (7241070)
- D** 8mm UniGrab & Karabiner (7234020)
- E** RoofSafe® Anchor Intermediate Guide (7234085)
- F** RoofSafe® Anchor 90° Corner (7241162)
- G** 8mm Hex Swage Toggle (7234011)
- H** RoofSafe® Anchor Baseplate 405 x 405 H (7241136)
- I** RoofSafe® Anchor Module End / Corner Bitumen (7241143)
- J** RoofSafe® Anchor Module Intermediate Bitumen (7241144)

Fasteners for fixing to the structure are not supplied.

*This component is different from the one illustrated



There are two energy absorbing modules available, the SpiraTech™ Anchor and the Tip Over Anchor.

The SpiraTech™ Anchor allows for 2 users to attach to the anchor for fall arrest and work restraint purposes. (Two users are not available for ANSI and CSA applications)

For those who do not require the SpiraTech™ Anchor the Tip Over Anchor is available for 1 user for fall arrest and work restraint purposes.

The SpiraTech™ Anchor can also be used in the end/corner position of a Horizontal Lifeline System. The lifeline is supported at regular intervals with the Tip Over Anchor.

(Please refer to typical system layout diagram)



Capital Safety Group, through our Uniline brand is the global market leader in the design and manufacture of engineered fall protection systems. Through a combination of expert knowledge and practical experience, we can help our customers reduce risk and increase safety when working at height.

Our comprehensive Uniline range of products offers fully compliant, practical solutions for structures of all types, in all industries. Our ethos of delivering quality, service, training and support for our customers has earned Uniline a deserved reputation for excellence around the world.

Operating through specialist safety companies globally, Uniline provides local support and installation services to meet the specific safety objectives of all our customers.

FERU İş Güvenliği ve Metal Yapı San. Tic. Ltd. Şti.
Turgut Reis Mah. Cengiz Topel Cad. No:16
Atışalanı-Esenler 34235 İstanbul Türkiye
feru@feru.com.tr www.feru.com.tr

LOCAL DISTRIBUTOR/SYSTEMS INSTALLER

Worldwide Locations

UK
5a Merse Road
North Moons Moat
Redditch, Worcestershire
B98 9HL
UK
t: +44 (0) 1527 548 000
f: +44 (0) 1527 591 000

EUROPE, MIDDLE EAST &
AFRICA
Le Broc Center
Z.I. 1re Avenue – BP15
06511 Carros Le Broc Cedex
FRANCE
t: +33 (0)4 97 10 00 10
f: +33 (0)4 93 08 79 70

USA
3833 SALA Way
Red Wing
MN 55066
USA
freephone: 800 328 6146
t: +1 (651) 388 8282
f: +1 (651) 388 5065

CANADA
260 Export Boulevard
Mississauga
Ontario L5S 1Y9
CANADA
freephone: 800 387 7484
t: +1 (905) 795 9333
f: 888 387 7484

ASIA
No 6 Tuas Avenue 18
638892
SINGAPORE
t: +(65) 65587758
f: +(65) 65587058

AUSTRALIA & NEW ZEALAND
95 Derby Street
Silverwater
NSW 2128
AUSTRALIA

freephone: 1800 245 002 (AUS)
freephone: 0800 212 505 (NZ)
t: +61 2 8753 7600
f: +61 2 8753 7603



www.capitalsafety.eu